



Fire Reports v1.48

February 10th, 2020

New in This Release

New Feature Highlight:

The following new features are the most impactful for users, so we describe them here in greater detail:

Mapping Tab

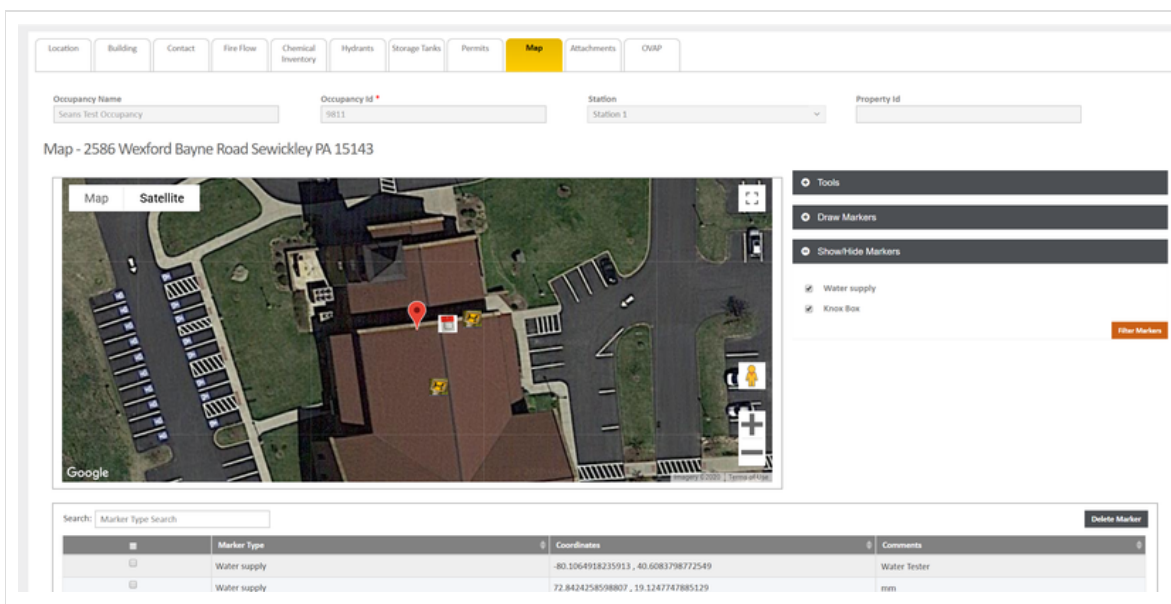


Fig. 1: Mapping tab showing custom markers on an exterior view of a building.

OVAP Tab

Fig. 2: OVAP tab showing calculated scores for a given occupancy.

New Features

The following features have been added in this release:

Key	Summary	Release Notes
FIRE-618	Sign Offs Tab Enhancements	Several improvements were made on the Sign Offs tab to improve the overall workflow and usability.
FIRE-482	Reduce Inspection Header on Subsequent Tabs	In the Inspections module, the header area was reduced in size on tabs beyond the initial tab. This was done to preserve space since the current header was relatively large. This should improve overall appearance, especially on smaller devices.
FIRE-567	Basic Tab Address Options	An additional option to add address information was added to the basic tab. In addition to the Google Address search and the Common Address search, there is now a third option to select from a pre-configured list of streets. Also, configuration options were added to turn these options on or off.
FIRE-585	Fire Occupancy Map Tool	We have added a new feature under the Occupancy module that allows to view a 3D exterior image of buildings and place custom map markers and draw lines to estimate square footage.
FIRE-598	Occupancy - OVAP Tab	We have added a feature within the Occupancy module that provides the ability to calculate OVAP risk scores for occupancies.

Improved in This Release

The following issues have been addressed and resolved in this release:

Key	Summary	Release Notes
FIRE-619	Apparatus Tab Saving Incorrect Data / Causes Validation Issues	Fixed an issue on the Apparatus and Personnel Tab where attempting to save just a date without the time would result in an un-clearable validation error.
FIRE-616	Error on NFIRS Export with Multiple Patients	Fixed an issue in the NFIRS export process when attempting to export incidents with multiple patients. There would not be any obvious error, but errors were generated in the database resulting in inconsistent behavior.

FIRE-593	Relational Edit 121 - Cardiac Arrest Block K Required	Fixed an issue when cardiac arrest patients were added to a fire incident. In the NFIRS specification, Block K is required for cardiac arrest patients and this data was not displayed to the user.
FIRE-562	Property Use None is Not Exported	Fixed an issue where the selection of Property Use = None was not exporting.
FIRE-427	Red Borders on Required Fields in Casualties Tabs	Fixed an issue where the red borders on certain required fields on the Fire Service Casualties and Civilian Fire Casualties tab would not reappear if the tab was revisited and the fields were left blank.


Known Issues

The following issues have already been identified and will be addressed in a future release:

PDF Release Notes




emsCharts

 866.647.8282

 sales@emsCharts.com



Golden Hour

 858.768.2500

 sales@GoldenHour.com